



Alfred Benesch & Company
2359 Perimeter Pointe Parkway, Suite 350
Charlotte, NC 28208
www.benesch.com
704.521.9880
Corp. NC License: F-1320
Project #17.000357.01

SAMPSON COUNTY 911 & ES FACILITIES

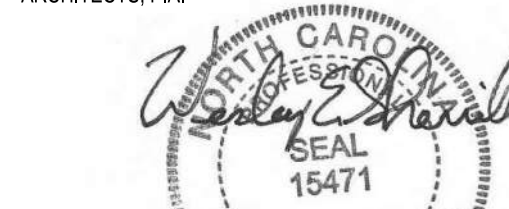
CLINTON,
NORTH CAROLINA

CONSTRUCTION DOCUMENTS

LANDSCAPE PLAN

DATE 12.04.2020
PROJECT NO 20003
REVISIONS
NUM. DATE DESCRIPTION:

THIS DRAWING IS THE PROPERTY OF ADW ARCHITECTS, P.A. AND SHALL NOT BE REPRODUCED OR COPIED IN WHOLE OR IN PART. IT SHALL NOT BE USED ON ANY OTHER PROJECT OR GIVEN TO ANY OTHER COMPANY OR AGENCY WITHOUT THE CONSENT OF ADW ARCHITECTS, P.A.

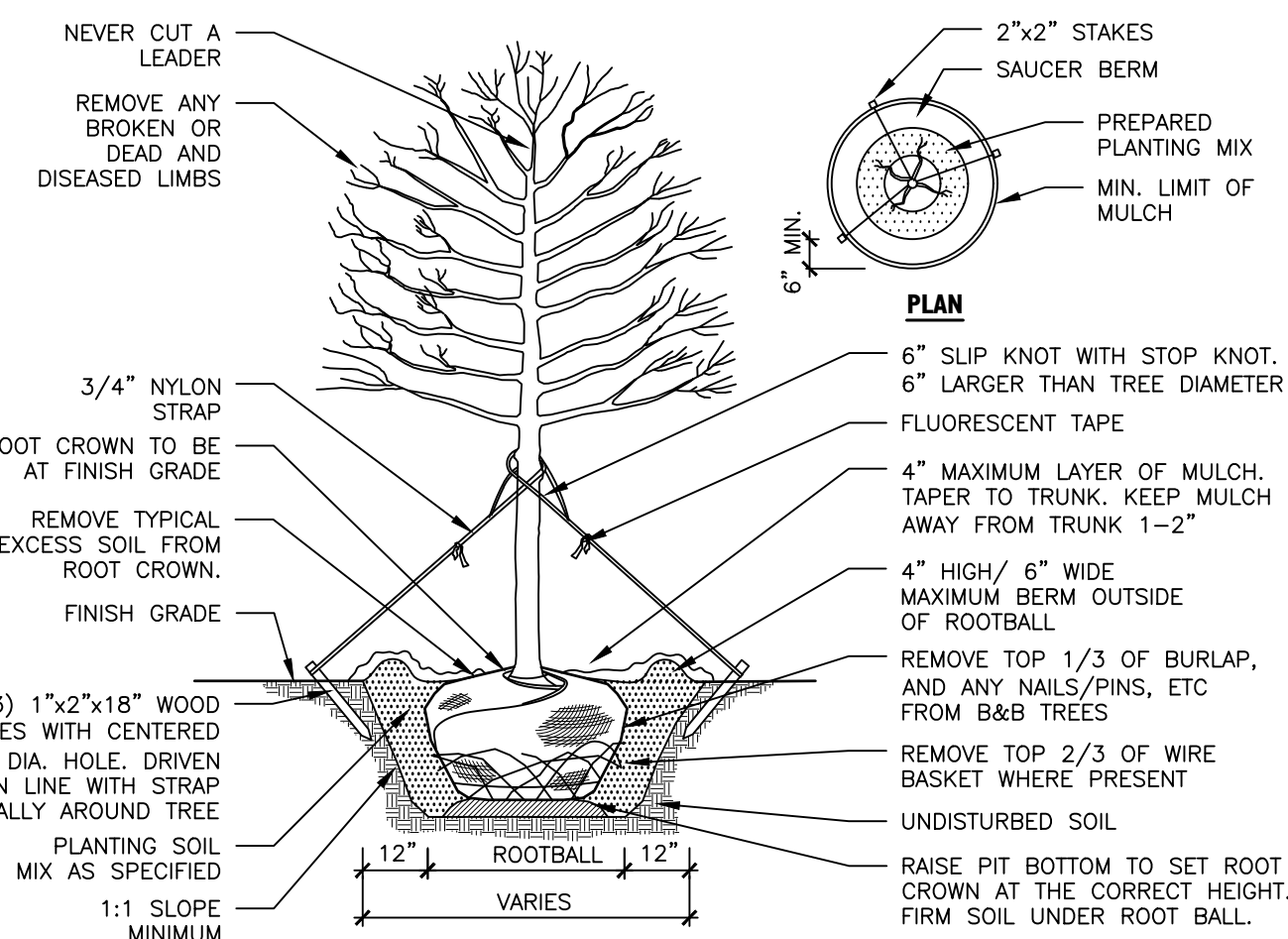


SEAL

12/4/20

SHEET NUMBER

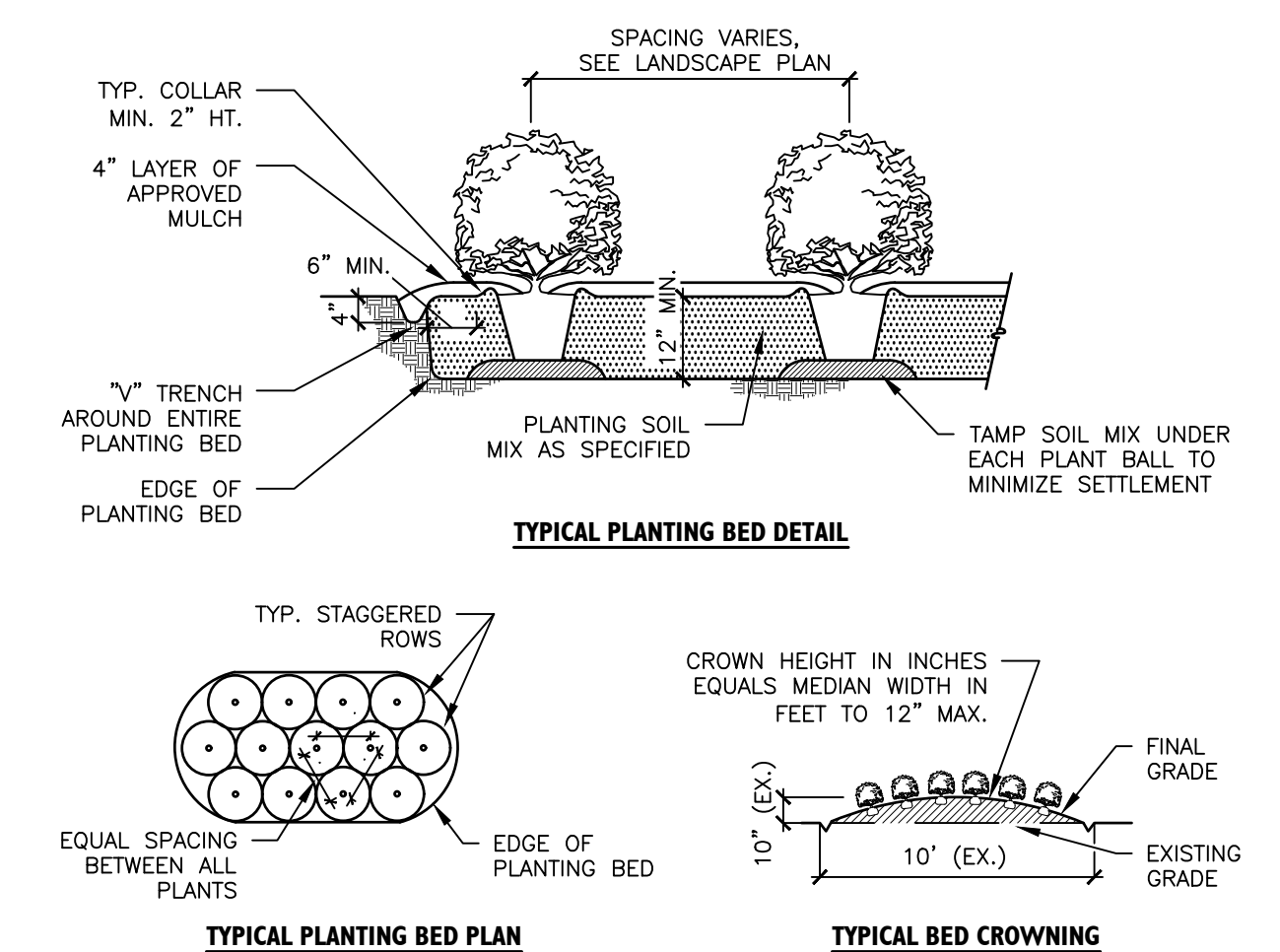
C600



NEVER CUT A LEADER
REMOVE ANY BROKEN OR DEAD AND DISEASED LIMBS
3/4" NYLON STRAP
ROOT CROWN TO BE AT FINISH GRADE
REMOVE TYPICAL EXCESS SOIL FROM ROOT CROWN.
FINISH GRADE
(3) 1"x2"x16" WOOD STAKES WITH CENTERED 1" DIA. HOLE, DRIVEN IN LINE WITH STRAP EQUALLY AROUND TREE
PLANTING SOIL MIX AS SPECIFIED
1:1 SLOPE MINIMUM
2"x2" STAKES
SAUCER BERM
PREPARED PLANTING MIX
MIN. LIMIT OF MULCH
PLAN
6" SLIP KNOT WITH STOP KNOT, 6" LARGER THAN TREE DIAMETER
FLUORESCENT TAPE
4" MAXIMUM LAYER OF MULCH, TAPER TO TRUNK, KEEP MULCH AWAY FROM TRUNK 1-2"
4" HIGH/ 6" WIDE MAXIMUM BERM OUTSIDE OF ROOTBALL
REMOVE TOP 1/3 OF BURLAP, AND ANY NAILS/PINS, ETC FROM B&B TREES
REMOVE TOP 2/3 OF WIRE BASKET WHERE PRESENT
UNDISTURBED SOIL
RAISE PIT BOTTOM TO SET ROOT CROWN AT THE CORRECT HEIGHT, FIRM SOIL UNDER ROOT BALL.
SECTION
ALL TREES SHALL MEET AMERICAN STANDARD FOR NURSERY STOCK (ANSI Z60.1-2004) FOR EXAMPLE: CALIPER HEIGHT (RANGE) MAX. HT. MIN. ROOT BALL DIA. MIN. ROOT BALL DEPTH
12-14' 18' 24' 16' 32'
3" 14-16' 18' 21'

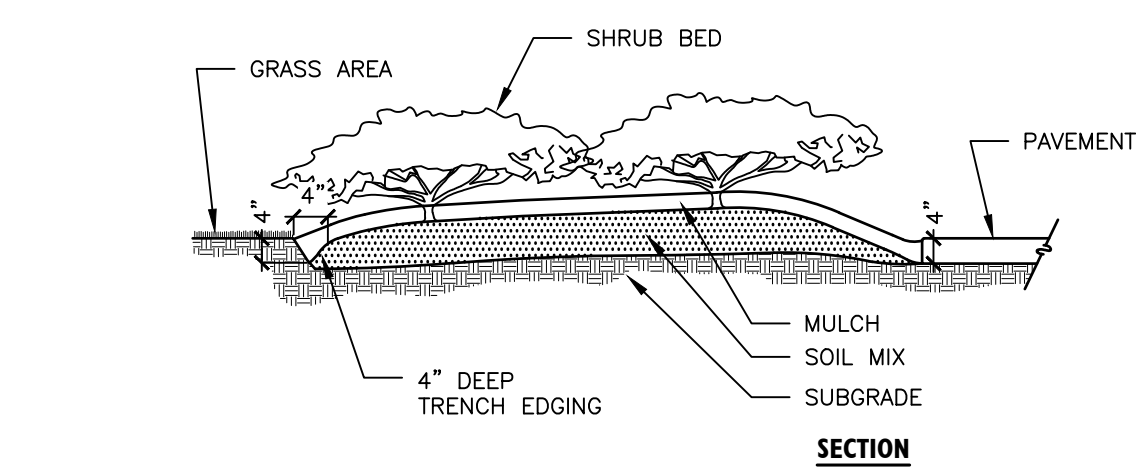
- NOTES
1. ALL TREES ARE TO BE NURSERY GROWN, BALL AND BURLAP (B&B) PREFERRED.
 2. ALL STRAPPING, AND TOP 1/3 OF WIRE BASKET AND BURLAP MUST BE CUT AWAY AND REMOVED FROM ROOT BALL WHEN PLANTING. SOAK PLANT BALL AND PIT IMMEDIATELY AFTER INSTALLATION.
 3. INSTALL TOP OF PLANT BALL 2" ABOVE FINISH GRADE.
 4. 4" SAUCER WILL BE OUTSIDE OF BACKFILL.
 5. NO BACKFILL ALLOWED ON TOP OF ROOT BALL.
 6. WHERE STRAPPING OR GUYING IS INSTALLED, CONTRACTOR SHALL REMOVE ALL STAKES, GUYING ETC. AT END OF WARRANTY PERIOD.
 7. SEE SPECIFICATIONS FOR OTHER REQUIREMENTS.
 8. REMOVE EXCESS SOIL FROM SITE AND DISPOSE OF IN A LEGAL MANNER.
 9. RE-SEED UNMULCHED, DISTURBED AREAS.
 10. STAKING IS REQUIRED FOR ALL TREES IN R.O.W. OR UPON REQUEST OF ARBORIST.

1 Tree Planting Detail N.T.S.

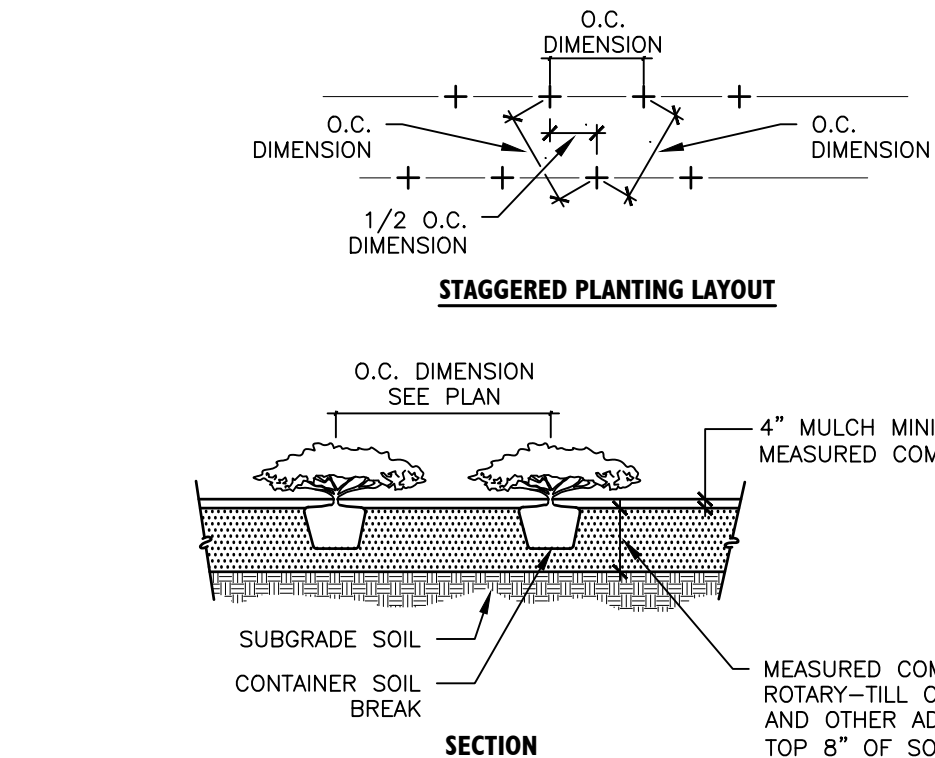


- NOTES
1. SCARIFY ROOT MASS OF CONTAINERIZED PLANT MATERIAL.
 2. INSTALL CONTAINERIZED PLANTS AT FINISHED GRADE.
 3. TAMP PLANTING MIX FIRMLY AS PIT IS FILLED AROUND EACH PLANT BALL.
 4. OMIT COLLAR AROUND EACH SHRUB WHEN IRRIGATION SYSTEM IS PRESENT.
 5. SOAK EACH PLANT BALL AND PIT IMMEDIATELY AFTER INSTALLATION.
 6. SEE SPECIFICATIONS FOR FURTHER SOIL AND PLANTING REQUIREMENTS.

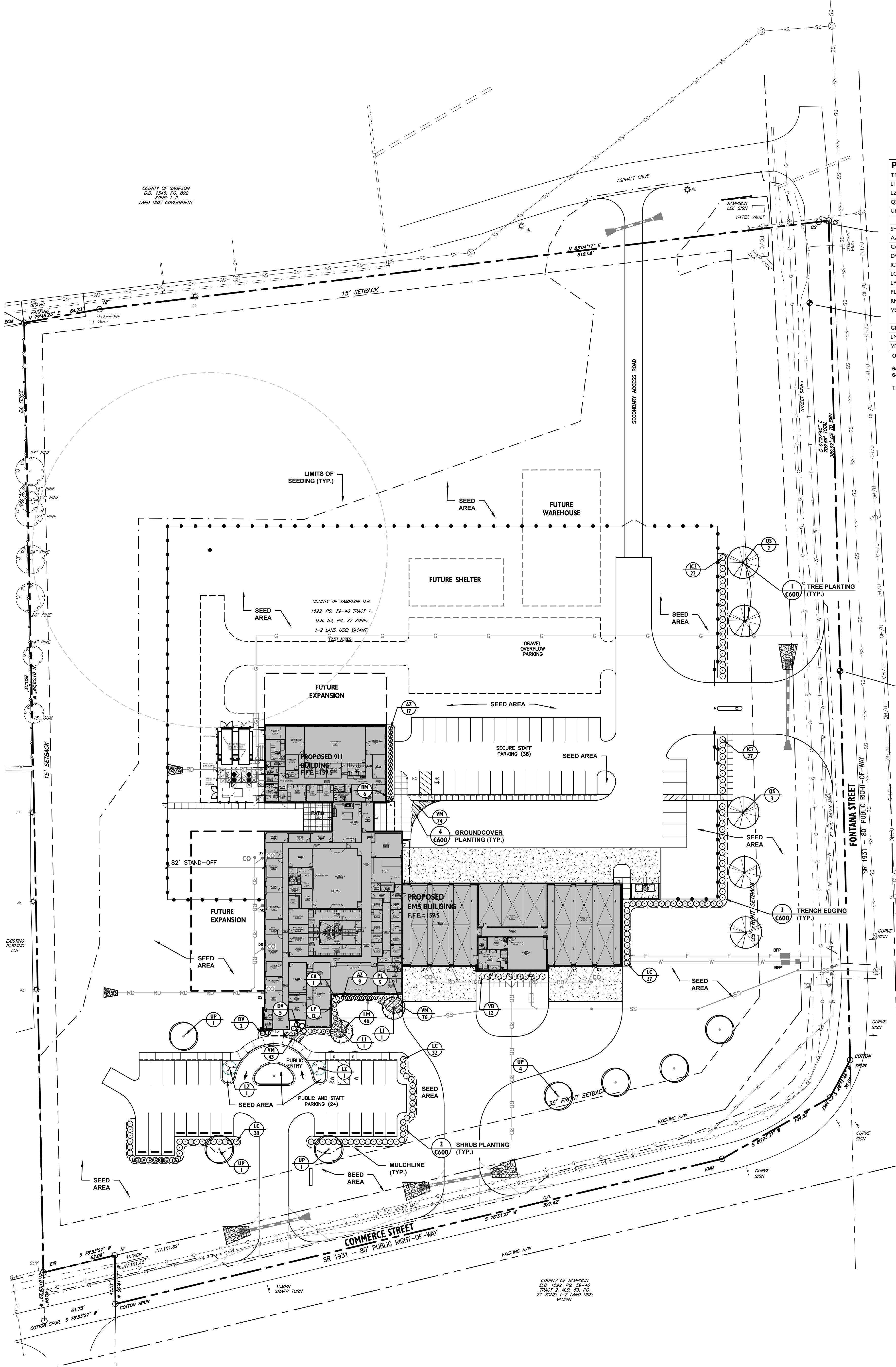
2 Shrub Planting Detail N.T.S.



3 Trench Edging Detail N.T.S.



4 Groundcover Planting Detail N.T.S.



PLANT SCHEDULE

TREES	QTY	BOTANICAL / COMMON NAME	ROOT	CAL	REMARKS	SIZE
AZ	2	Lagerstroemia indica x 'Natchez' / Natchez Crape Myrtle	B & B	1.5" Cal	3-5 stems	8-10' HT.
LI	2	Lagerstroemia indica 'Zuni' / Lavender Crape Myrtle Multi-Trunk	B & B	1 1/2" per stem		6-8' HT.
LZ	2	Lagerstroemia indica 'Zuni' / Lavender Crape Myrtle Multi-Trunk	B & B	2" Cal	MATCHED, STRAIGHT	12'-14' ht, 6'-8' w
Q5	5	Quercus shumardii / Shumard Red Oak	B & B	2" Cal	MATCHED, STRAIGHT	10-12' HT.
UP	7	Ulmus parvifolia 'Athena' / Athena Elm	B & B	2" Cal	MATCHED, STRAIGHT	10-12' HT.

SHRUBS	QTY	BOTANICAL / COMMON NAME	CONT	REMARKS	HEIGHT	SPREAD
AZ	26	Azalea Encore 'Autumn Embers' TM / Autumn Embers Azalea	3 gal	3.5' O.C.	15-18" HT.	15-18"
CA	1	Camellia sasanqua 'Apple Blossom' / Apple Blossom Camellia	7 gal	6.5' O.C.	24-30" HT.	24"
DV	7	Disyllum x Vintage Jade / Vintage Jade Disyllum	3 gal	4.5' O.C.	15-18" HT.	18-24"
IC2	49	Ilex cornuta 'Burfordii Nana' / Dwarf Burford Holly	7 gal	5' O.C.	24-30" HT.	24-30"
LC	87	Loropetalum chinense 'Ever Red Sunset' / Ever Red Sunset Loropetalum	5 gal	5' O.C.	24-30" HT.	24-30"
LP	12	Loropetalum chinense 'Purple Pixie' / Purple Pixie Loropetalum	3 gal	4' O.C.	12-15" HT.	15-18"
PL	5	Prunus laurocerasus 'Otto Luyken' / Luyken's Laurel	5 gal	4' O.C.	18-24" HT.	18-24"
RH	6	Rosa 'Miegli' / Peach Drift Groundcover Rose	3 gal	24" O.C.	12-15" HT.	12-15"
VB	12	Viburnum x burkwoodii / Burkwood Viburnum	7 gal	5' O.C.	24-30" HT.	18-24"

GROUND COVERS	QTY	BOTANICAL / COMMON NAME	CONT	REMARKS	SPACING
LI	46	Liriodendron 'Big Blue' / Big Blue Liriodendron	4" pot	15' O.C.	
VH	199	Vincetoxicum / Common Periwinkle	4" pot	16' O.C.	16' O.C.

OPEN SPACE CALCULATIONS ALONG FRONT OF BLDG:

64,386 S.F. GREENSPACE ALONG FONTANA STREET
64,966 S.F. GREENSPACE ALONG COMMERCE STREET
TOTAL PROPERTY AREA=488,944 S.F.

LANDSCAPE NOTES

PLANT MATERIAL

1. MINIMUM TREE SIZE AT PLANTING IS 2" CALIPER AND 8' TALL FOR SINGLE-STEM TREES. ALL MULTI-STEM PLANTS MUST BE TREE FORM, MAXIMUM 3 TO 5 TRUNKS, AND MINIMUM 10' TALL.
2. ALL NEW TREES MUST HAVE STRAIGHT TRUNKS WITH STRONG CENTRAL LEADERS INTACT TO THE TOP OF THE CROWN UNLESS MULTI-STEM TREES ARE SPECIFIED. ALL TREES SHALL BE TYPICAL OF THEIR SPECIES AND VARIETY, HAVE NORMAL GROWTH HABITS, HAVE WELL-DEVELOPED BRANCHES, BE VIGOROUS AND HAVE FIBROUS ROOT SYSTEMS. TREES WITH CO-DOMINANT BRANCHING WILL NOT BE ACCEPTED. TREES THAT HAVE BEEN SHEARED, TOPPED OR CUT BACK TO MULTIPLY THE BRANCHING STRUCTURE WILL NOT BE ACCEPTED. TREES SHALL BE FREE OF ABRASIONS, DAMAGE, DISEASE, PESTS AND CRACKS. ALL PRUNING CUTS GREATER THAN 1/2" DIAMETER SHALL HAVE CALLUS TISSUE FORMED PRIOR TO PLANTING. NO PRUNING CUT ON THE TRUNK SHALL BE MORE THAN ONE-HALF THE DIAMETER OF THE CENTRAL LEADER AT THE HEIGHT WHERE THE CUT WAS MADE. ROOT FLARES SHALL BE LOCATED AT GRADE. TREES WITH MORE THAN 2" OF SOIL COVERING THE ROOT BALL FLARE FROM WILL NOT BE ACCEPTED.
3. SIZE OF PLANTS, SPREAD OF ROOTS AND SIZE OF BALLS SHALL BE IN ACCORDANCE WITH ANSI Z60.1 (LATEST EDITION) AS PUBLISHED BY THE AMERICAN NURSERY & LANDSCAPE ASSOCIATION.
4. ALL TREES OF A PARTICULAR SPECIES AND VARIETY SHALL BE UNIFORM IN SIZE AND CONFIGURATION.

PLANTING REQUIREMENTS

1. PLASTIC HOSE PARTS WILL NOT BE ACCEPTED FOR TREE STAKING. SEE DETAILS AND SPECIFICATIONS FOR APPROVED STAKING METHOD/MATERIALS.
2. ALL STRAPPING, AND TOP 1/3 OF WIRE BASKET AND BURLAP MUST BE CUT AWAY AND REMOVED FROM ROOT BALL WHEN PLANTING.
3. FOR NEW PLANTING AREAS, REMOVE ALL PAVEMENT, GRAVEL, SUB-BASE AND CONSTRUCTION DEBRIS. REMOVE COMPACTED SOIL AND ADD 24" NEW TOPSOIL, OR TILL AND AMEND THE TOP 24" OF EXISTING SOIL, TO MEET TOPSOIL PLANTING MIX STANDARDS FOR TREES.
4. ALL SAUCERS SHALL BE SOAKED WITH WATER AND MULCHED IMMEDIATELY FOLLOWING PLANTING.
5. THE TOP OF ALL ROOT BALLS FOR SHRUBS & GROUNDCOVERS SHALL BEAR THE SAME RELATIONSHIP TO FINISHED GRADE, AS BORN TO PREVIOUS GROWING CONDITIONS.
6. ALL ROOT BALLS REMOVED FROM CONTAINERS SHALL BE SCARIFIED PRIOR TO BACKFILLING.
7. MULCH A MINIMUM 4 FOOT AREA AROUND EACH TREE AND - MULCH A CONTINUOUS AREA AROUND ALL SHRUB BEDS, AS INDICATED ON THE PLAN. MULCH SHALL BE 3-4" THICK. MULCH AROUND TREES SHALL BE TAPERED TOWARD TRUNK SO THAT NO MORE THAN 2" IS PLACED AT TREE TRUNK AS SHOWN ON DETAIL. SEE SPECIFICATIONS FOR TYPE.

UTILITY ISSUES

1. LARGE MATURING TREES MAY NOT BE PLANTED WITHIN 25' OF OVERHEAD POWER DISTRIBUTION OR TRANSMISSION LINES. IF TREES CONFLICT WITH POWER LINES OR SIGNS, CALL LANDSCAPE ARCHITECT TO RESOLVE BEFORE PLANTING.
2. CONTRACTOR IS RESPONSIBLE FOR HAVING ALL UNDERGROUND UTILITIES LOCATED AND CLEARLY PAINTED WITHIN 10 DAYS OF ANY GROUND DISTURBING ACTIVITY. OWNER WILL NOT PAY FOR UTILITY REPAIRS DUE TO FAILURE TO MARK AND OBSERVE UTILITY LOCATIONS.
3. ADJUST TREE PLANTING LOCATIONS TO AVOID UNDERGROUND UTILITIES. PLANT 15' FROM ALL UNDERGROUND UTILITIES (SEWER AND STORM DRAINAGE, GAS, WATER, PHONE AND ELECTRICAL LINES).

GENERAL

1. THE LANDSCAPE CONTRACTOR SHALL BE RESPONSIBLE FOR THE QUANTITY OF PLANTS SHOWN ON THE PLAN. ANY DISCREPANCIES BETWEEN QUANTITIES ON PLAN AND PLANT LIST SHALL BE BROUGHT TO THE ATTENTION OF THE LANDSCAPE ARCHITECT AND ANY FIELD ADJUSTMENTS OR QUANTITY ADJUSTMENTS MUST BE AUTHORIZED PRIOR TO PLANTING.
2. ALL PLANTS SHALL BE GUARANTEED TO BE IN HEALTHY CONDITION FOR ONE (1) YEAR AFTER ACCEPTANCE BY OWNER OF ALL PLANT MATERIAL.
3. ALL DISTURBED AREAS SHALL BE SEED AS SPECIFIED.
4. SEE EROSION CONTROL/GRADING PLAN FOR ADDITIONAL TREE PRESERVATION NOTES.

LEGEND

- SIGN
- EXISTING LIGHT POLE
- EXISTING UTILITY POLE
- ACCESSIBLE SPACE
- EXISTING FIRE HYDRANT
- EXISTING TREE TO REMAIN
- PROPOSED GROUNDCOVER
- PLANT LABEL
- PLANT QUANTITY
- EXISTING CURB AND GUTTER
- PROPOSED CURB AND GUTTER
- PROPERTY LINE
- EXISTING FENCE
- PROPOSED FENCE
- UGE
- EXISTING UNDERGROUND ELECTRIC LINE
- OH/U
- EXISTING OVERHEAD UTILITY LINE
- EXISTING TREE LINE
- PROPOSED TREE LINE AFTER CLEARING
- PROPOSED MULCH LINE
- PROPOSED STORM DRAINAGE PIPE
- FD
- PROPOSED FOUNDATION DRAIN
- SS
- SANITARY SEWER LINE
- DW
- WATER LINE



Know what's below.
Call before you dig.

SCALE: 1"=40'

